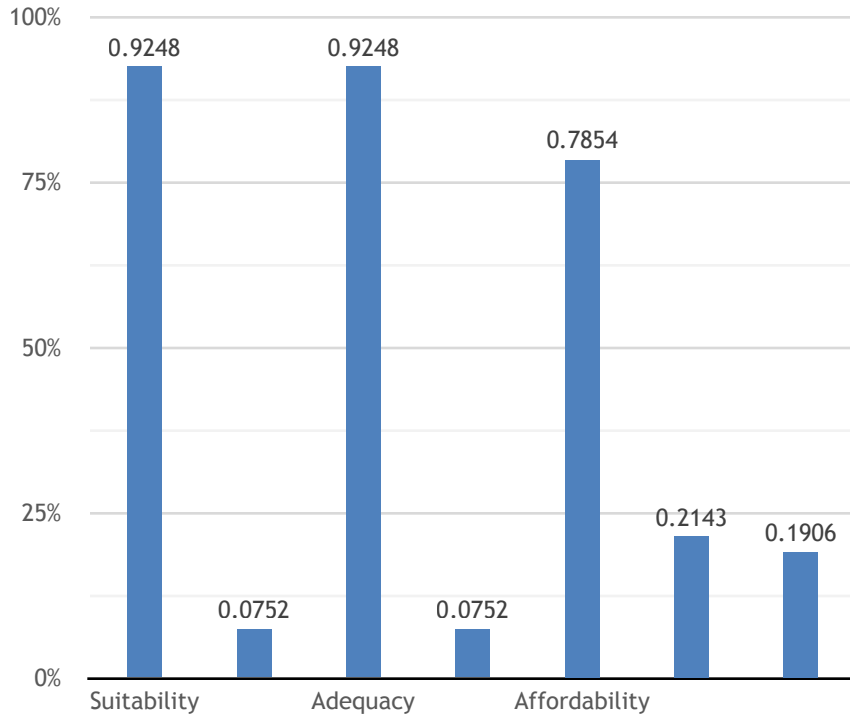


# urban **matters**

## Strathcona Regional District Housing Indicators

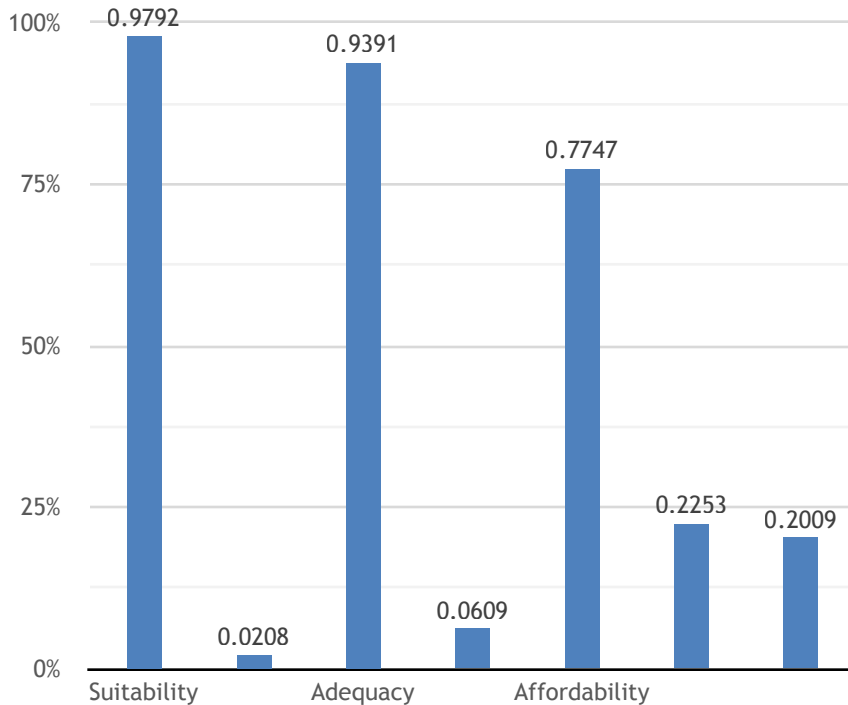


# Strathcona Regional District (CD)



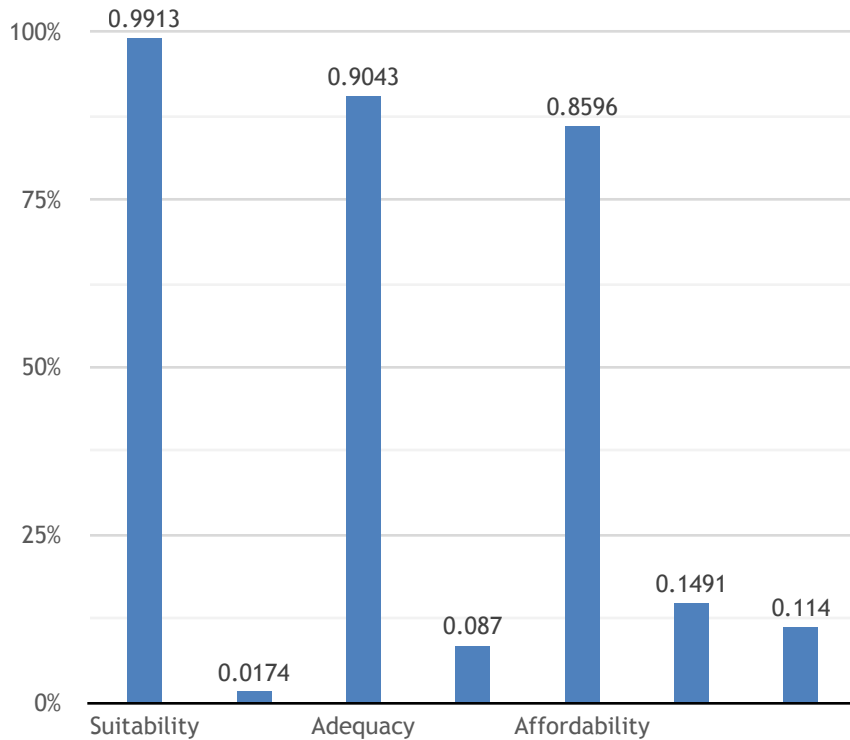
	Number	Percentage of Total
<b>Total by Suitability</b>		100.0%
Suitable		97.6%
Not Suitable		2.4%
<b>Total by Adequacy</b>		100.0%
Regular Maintenance or Minor Repairs	18,135	92.5%
Major Repairs		7.5%
<b>Total by Affordability</b>		100.0%
Spending less than 30% of income on shelter costs	14,915	78.5%
Spending 30% or more of income on shelter costs	4,070	21.4%
30% to less than 100%		19.1%

# Campbell River (CY)



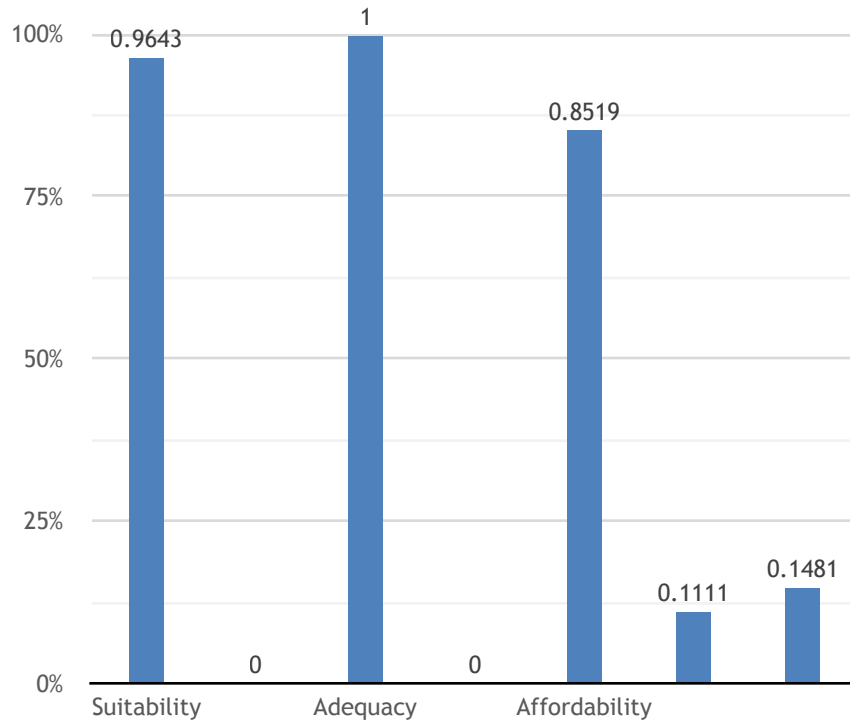
	Number	Percentage of Total
<b>Total by Suitability</b>		100.0%
Suitable		97.9%
Not Suitable		2.1%
<b>Total by Adequacy</b>		100.0%
Regular Maintenance or Minor Repairs	13,335	93.9%
Major Repairs		6.1%
<b>Total by Affordability</b>		100.0%
Spending less than 30% of income on shelter costs	10,970	77.5%
Spending 30% or more of income on shelter costs	3,190	22.5%
<i>30% to less than 100%</i>		20.1%

# Gold River (CSD)



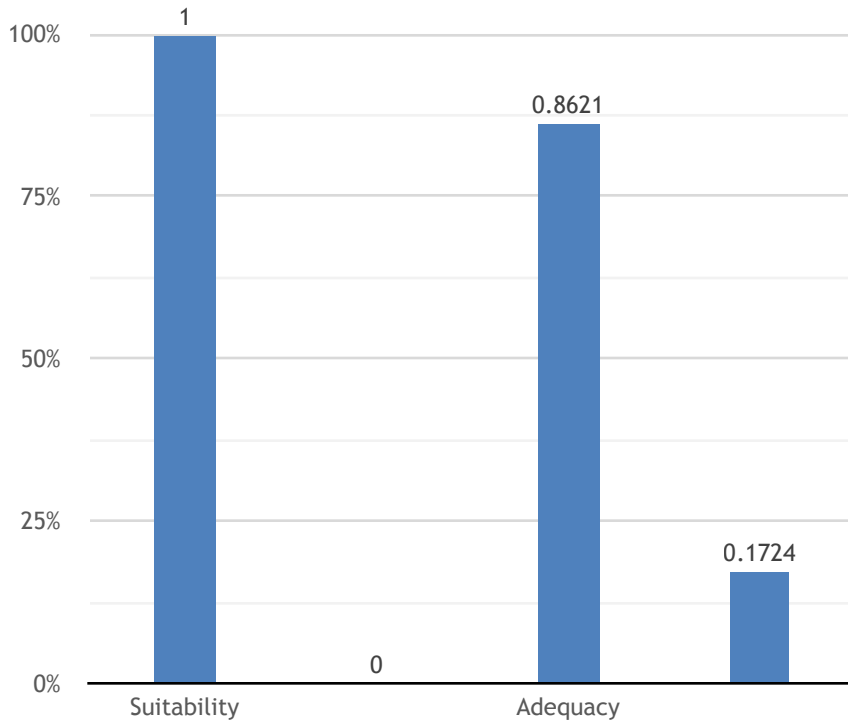
	Number	Percentage of Total
<b>Total by Suitability</b>		100.0%
Suitable		99.1%
Not Suitable		1.7%
<b>Total by Adequacy</b>		100.0%
Regular Maintenance or Minor Repairs	520	90.4%
Major Repairs		8.7%
<b>Total by Affordability</b>		100.0%
Spending less than 30% of income on shelter costs	490	86.0%
Spending 30% or more of income on shelter costs	85	14.9%
<i>30% to less than 100%</i>		<i>11.4%</i>

# Sayward (CSD)



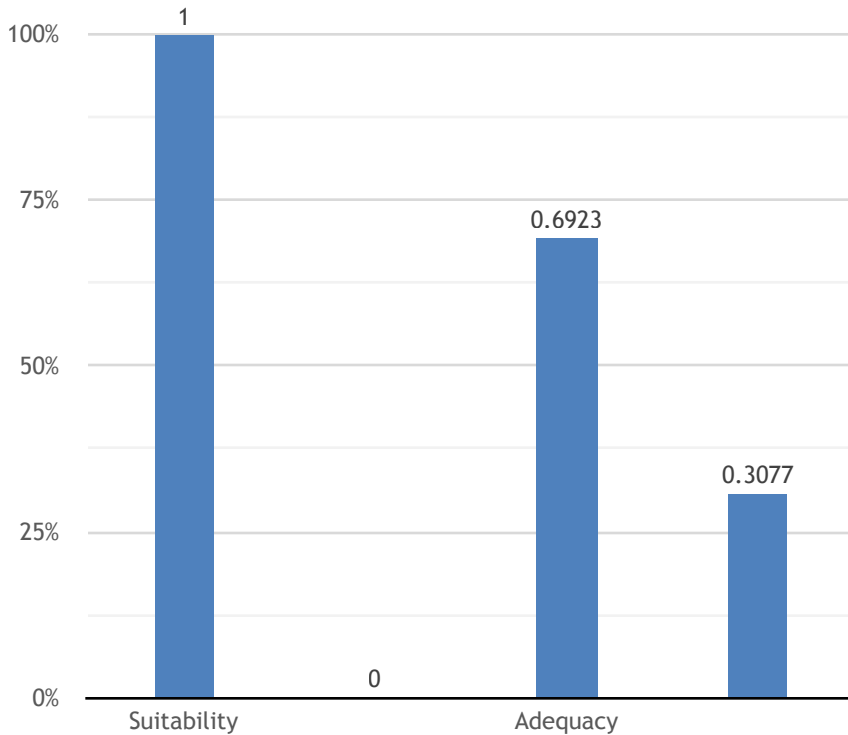
	Number	Percentage of Total
<b>Total by Suitability</b>		100.0%
Suitable		96.4%
Not Suitable		0.0%
<b>Total by Adequacy</b>		100.0%
Regular Maintenance or Minor Repairs	140	100.0%
Major Repairs		0.0%
<b>Total by Affordability</b>		100.0%
Spending less than 30% of income on shelter costs	115	85.2%
Spending 30% or more of income on shelter costs	15	11.1%
30% to less than 100%		14.8%

# Tahsis (CSD)



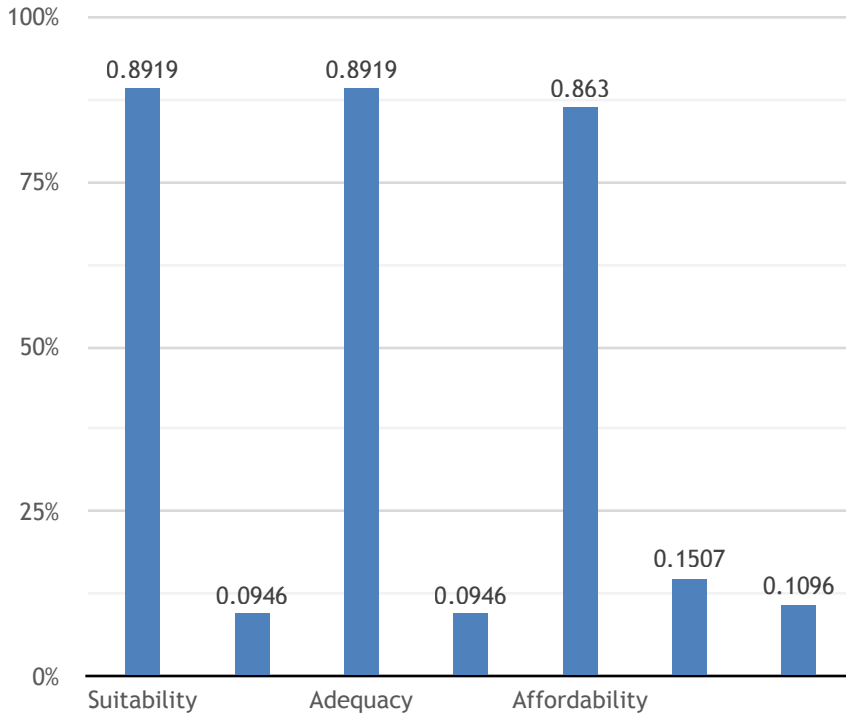
	Number	Percentage of Total
<b>Total by Suitability</b>		100.0%
Suitable		100.0%
Not Suitable		0.0%
<b>Total by Adequacy</b>		100.0%
Regular Maintenance or Minor Repairs	125	86.2%
Major Repairs		17.2%
<b>Total by Affordability</b>	NA	NA
Spending less than 30% of income on shelter costs	NA	NA
Spending 30% or more of income on shelter costs	NA	NA
30% to less than 100%	NA	NA

# Zeballos (CSD)



	Number	Percentage of Total
<b>Total by Suitability</b>		100.0%
Suitable		100.0%
Not Suitable		0.0%
<b>Total by Adequacy</b>		100.0%
Regular Maintenance or Minor Repairs	45	69.2%
Major Repairs		30.8%
<b>Total by Affordability</b>	NA	NA
Spending less than 30% of income on shelter costs	NA	NA
Spending 30% or more of income on shelter costs	NA	NA
30% to less than 100%	NA	NA

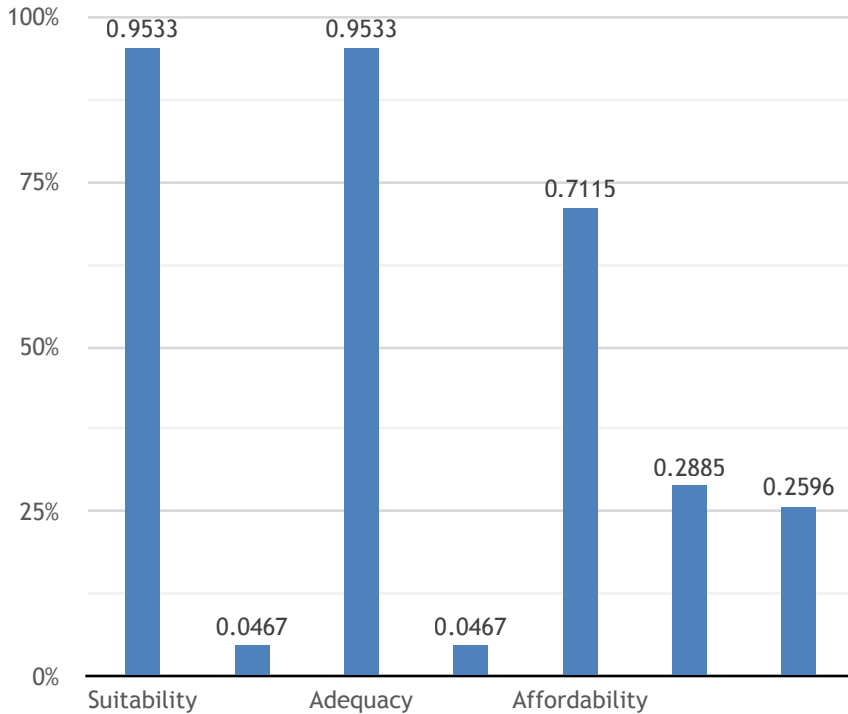
# Area A (CSD)



	Number	Percentage of Total
<b>Total by Suitability</b>		100.0%
Suitable		98.6%
Not Suitable		2.7%
<b>Total by Adequacy</b>		100.0%
Regular Maintenance or Minor Repairs	330	89.2%
Major Repairs		9.5%
<b>Total by Affordability</b>		100.0%
Spending less than 30% of income on shelter costs	315	86.3%
Spending 30% or more of income on shelter costs	55	15.1%
30% to less than 100%		11.0%

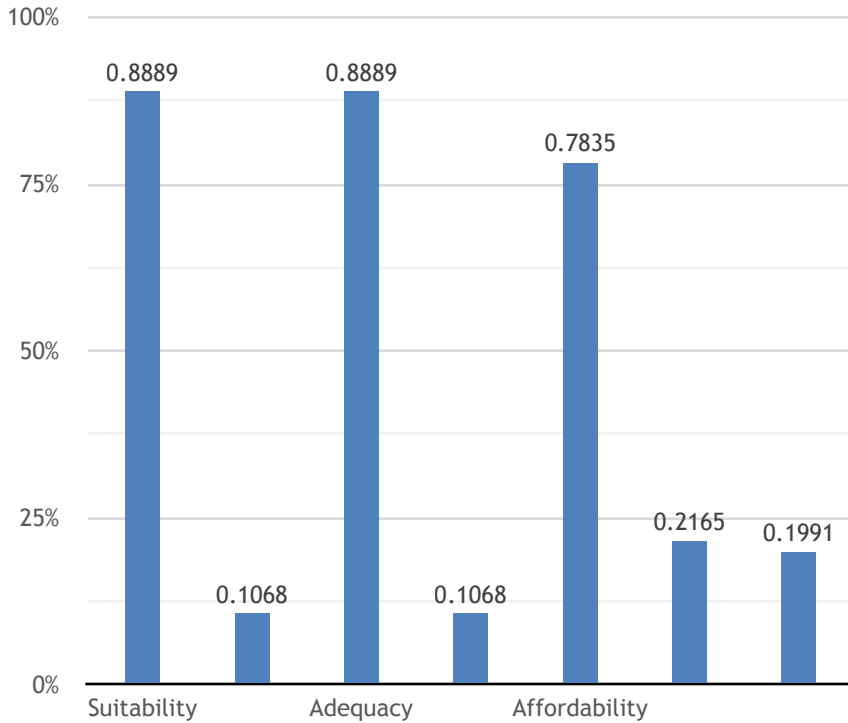


# Area B (CSD)



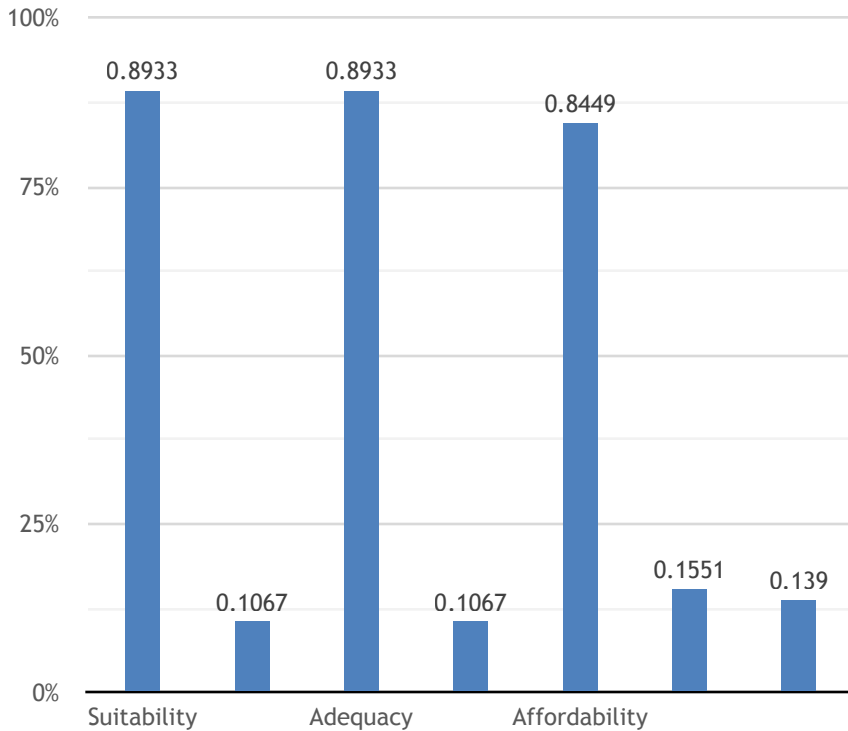
	Number	Percentage of Total
<b>Total by Suitability</b>		100.0%
Suitable		94.4%
Not Suitable		6.5%
<b>Total by Adequacy</b>		100.0%
Regular Maintenance or Minor Repairs	510	95.3%
Major Repairs		4.7%
<b>Total by Affordability</b>		100.0%
Spending less than 30% of income on shelter costs	370	71.2%
Spending 30% or more of income on shelter costs	150	28.8%
30% to less than 100%		26.0%

# Area C (CSD)



	Number	Percentage of Total
<b>Total by Suitability</b>		100.0%
Suitable		97.0%
Not Suitable		3.0%
<b>Total by Adequacy</b>		100.0%
Regular Maintenance or Minor Repairs	1,040	88.9%
Major Repairs		10.7%
<b>Total by Affordability</b>		100.0%
Spending less than 30% of income on shelter costs	905	78.4%
Spending 30% or more of income on shelter costs	250	21.6%
<i>30% to less than 100%</i>		19.9%

# Area D (CSD)



	Number	Percentage of Total
<b>Total by Suitability</b>		100.0%
Suitable		97.3%
Not Suitable		2.9%
<b>Total by Adequacy</b>		100.0%
Regular Maintenance or Minor Repairs	1,675	89.3%
Major Repairs		10.7%
<b>Total by Affordability</b>		100.0%
Spending less than 30% of income on shelter costs	1,580	84.5%
Spending 30% or more of income on shelter costs	290	15.5%
30% to less than 100%		13.9%